



MOUNTING INSTRUCTIONS

MEM-9974 FATS/SLIMS MOUNTING KIT Kawasaki 1600 Mean Streak/Suzuki 1600 Marauder

! WARNING

Read and follow these directions carefully. During installation, make certain that when turning the forks, there can be no interference with wiring or cables **AND**, that the mounting hardware can not hit the gas tank, through the windshield's full range of adjustment.

This is a quick change kit, **ALWAYS** tighten all mounting bolts after removing or installing the windshield! The improper installation of this kit and related components could result in serious injury or death.

Additional tools required, that are not included in this kit. 7/16" or 11mm wrench.

1. Cover gas tank and front fender with towels to avoid damage during installation.
2. Install the two mounting plates onto the windshield, using the bottom and third bolt up. Leave the nylon washers off. The small tab goes to the bottom, big one at the top. (see Figure 1) *Tabs face in towards the headlight when installed correctly.*

WARNING

If the adjustable clamps are installed backwards, it will result in serious gas tank damage. Always check for proper gas tank clearance before tightening hardware. (see Figure 2)

3. Loosely install the fork clamps, approximately 1 3/4" apart. (see Figure 2) **NOTE:** *The two clamps with the stainless steel washers, are to be mounted at the upper position, one left, one right.*
4. Loosen the four anchor bolts that are to hold the windshield to the fork clamps, and slide the mounting plates onto the anchor bolts. (see Figure 3)
5. Adjust the height, angle and alignment of the shield and tighten ALL bolts.

This is a quick change kit. **Always** tighten all mounting bolts after removing or installing the windshield.

CAUTION

IMPORTANT CARE AND CLEANING INSTRUCTIONS

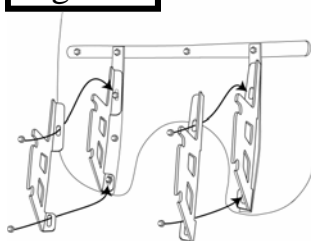
Memphis Shades Windshields and Lowers are made of Lucite® acrylic, and will last for years with proper care. Clean your windshield with plenty of soapy water — mild dishwashing liquid is best — and a soft cotton cloth. Use your bare hand to feel and dislodge bugs, or cover with a wet soapy towel and let it soak. Don't use paper towels and don't scrape with anything. Small scratches can be removed with NOVUS # 2.

NEVER use any glass cleaning products, petroleum based chemicals, or cleaning agents with ammonia, bleach or any other harsh chemicals. This includes (but not limited to) RainX, brake fluid, acetone, paint thinner, benzene and gasoline. "If it hurts your nose, it will hurt the plastic."

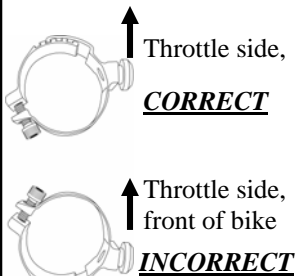
Glass cleansing agents will cause severe damage to your windshield, and will void your warranty.

NOTE: At certain times of the day the Sunlight can reflect off the curvature of a windshield and cause extreme heat build-up on motorcycle instruments and instrument panel. Take care when parking. Park facing the sun, place an opaque object over the instruments or adjust the windshield to avoid reflections.

Figure 1

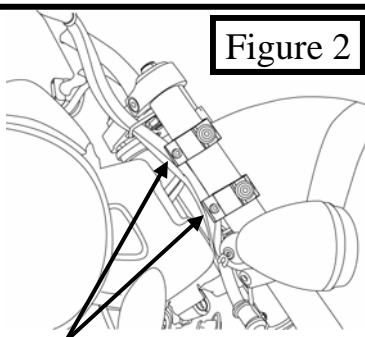


Tabs face in towards headlight, large tab on top, small tab on bottom.

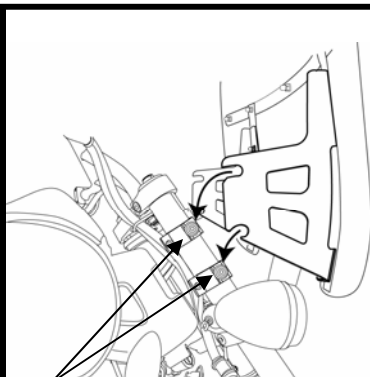


WARNING: "Mounting clamps backwards will cause damage to your tank."

Figure 2



Side view. When installed correctly, Allen bolts are tightened from the back side of the fork, not the front.



Anchor bolts

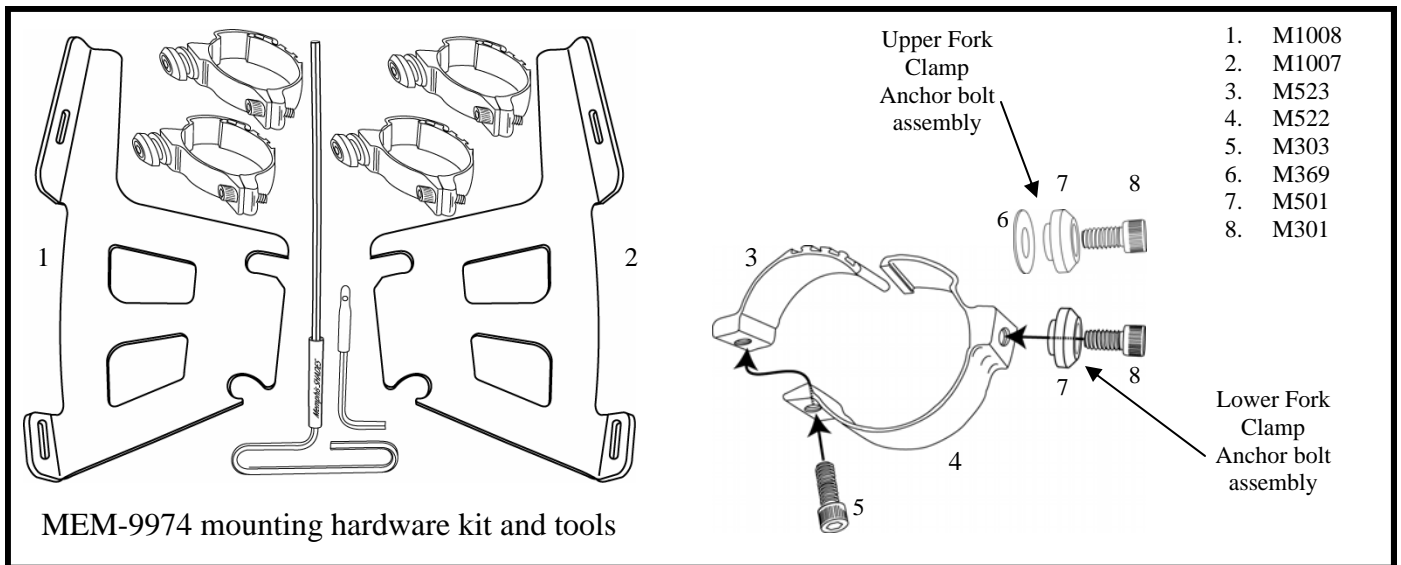
Figure 3



MOUNTING INSTRUCTIONS

MEM-9974 FATS/SLIMS MOUNTING KIT Kawasaki 1600 Mean Streak/Suzuki 1600 Marauder

PART #	DESCRIPTION	QTY.
M974	MOUNTING INSTRUCTIONS	1
M1007	LEFT MEANSTREAK MOUNTING PLATE	1
M1008	RIGHT MEANSTREAK MOUNTING PLATE	1
M301	1/4" - 20 X 3/8" SS SOCKET HEAD CAP SCREW	4
M303	1/4" - 20 X 3/4" SS SOCKET HEAD CAP SCREW	4
M369	SS FLAT WASHER	2
M523	LARGE INNER ADJ. FORK CLAMP, WITH TAPE	4
M522	LARGE OUTER ADJ. FORK CLAMP, WITH	4
M501	BEVELED SOCKET WASHER	4
M310	3/16" SHORT ARM ALLEN WRENCH	1
M313	3/16" ALLEN WRENCH COVER	1
M314	3/16" T-HANDLE ALLEN WRENCH	1
M337	3/16" T-HANDLE ALLEN WRENCH COVER	1



Memphis Shades warrants all product components, metal and plastic, against defects in materials and workmanship for 24 months.

FOR PARTS AND WARRANTY HELP, CONTACT:

MEMPHIS SHADES
P. O. Box 429
Rossville, TN 38066
(901) 853-0293

Visit us on the web at www.memphisshades.com or
you can also reach us at
customerservice@memphisshades.com